

A world first. The Astrologer's report writer

Solar Writer—Classical

Written in true Classical style this unique report packs a punch. It's not for the faint—hearted!



This specialist report writer is an ideal introduction to the concepts of Classical Astrology or for research on the application of Classical techniques in a birth chart. The non-editable text is recommended for professional astrologers rather than for client work.

Each report includes optional general explanations of techniques used and glossary of terms.

World renowned Author J Lee Lehman has created something unique based on her wealth of experience in both modern and classical astrology techniques.

Classical astrology is forthright and explicit; some may say blunt. The method of analysis may be shocking or even disturbing to the Modern Astrologer, who is used to toning down any negative

tendency encountered in a chart. Therefore, the purpose of this report is not to distribute it to the general public, but to provoke a re-examination by the Astrological Consultant of just how life will function if the Native does not take conscious control of the energies presented by the chart. This report writer is a teaching report, both to demonstrate classical techniques, as well as to remind the Modern Astrologer of what the raw thrust of the chart actually shows



SolarWriter—Classical includes a separate report introducing HUMOURS with your own complexion scores, ruler of the geniture as well as a general introduction.

The 50-page report includes a unique section introducing the Humours, as well as personal interpretations text for:

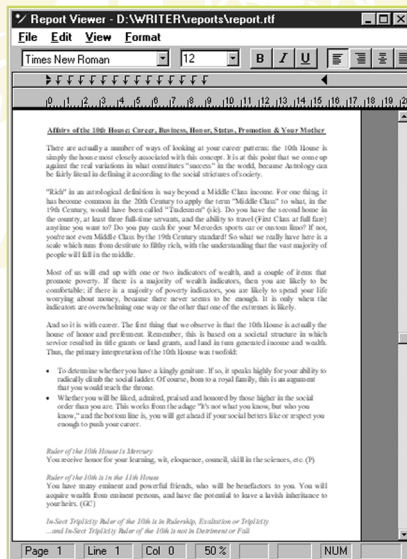
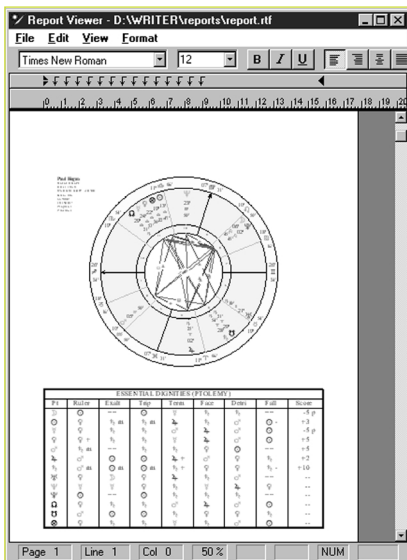
- Dignities and Debilities
- Ruler of the Geniture
- Sign of the Ascendant Ruler
- The Affairs of the House
- Health—6th House
- Ascendant's Almuten or Ruler
- Planets in Signs
- Length of Life—Alcocoden
- Aspects, Faces and more

About the author



Lee Lehman has a Ph.D. in Botany from Rutgers University, USA. She is author of The Ultimate Asteroid Book (1988), Essential Dignities (1989), The Book of Rulerships (1992), Classical Astrology for Modern Living (1996), The Martial Art of Horary Astrology (2002), and a translation from the French of Papus, Astrology for Initiates .

She originated the Classical Studies course curriculum, which presently includes seven regular courses: horary, natal, electional, medical, gaming, mundane and advanced horary. She teaches regular classes in Boston, Amsterdam, and recurring classes in several other cities. She is a Professor and Associate Dean at Kepler College. Lee was the recipient of the 1995 Marc Edmund Jones Award, the first horary astrologer so honored.



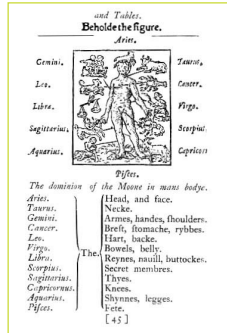
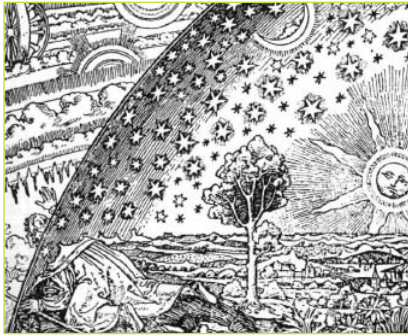
Available on CD



A fresh and original report on classical medical astrology

Solar Writer—*Medicus*

A program like Solar Writer—Medicus has never been seen before!



This creative report writer program works exclusively from an event chart enabling an astrologer to ask a horary question or erect a chart for the onset of an illness and then print an interpretations report.

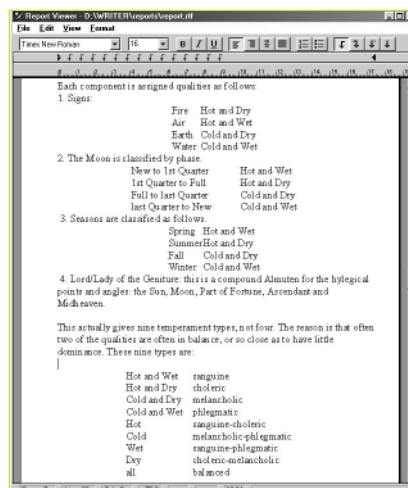
Solar Medicus is designed to give the modern astrologer the ancient medical teachings with minimal embellishment in an exclusive 20-page report.

This unique tool provides the astrologer with the teachings of multiple medical astrologers, including classical medical astrologers Nicholas Culpeper and Richard Saunders, in a fashion accessible to modern astrological technique. This distinctive report writer uses a database of over 1,400 statements and aphorisms (with citations) to extract those applicable to a single horary or event chart. The report generates works from the event or horary chart exclusively; it does not compare this chart to the nativity.

The citations are often exact quotations, but the compiler, Dr. J. Lee Lehman, has added commentary to explain archaic terminology and to update the anatomical references. The report is designed to provide the astrologer with the exact astrological indicators used, to facilitate further astrological study and delineation.

Dr Lehman says: "Traditional medical astrology has consisted of both a general theory, and a lot of specific case histories. Unfortunately, the general theory has seldom been enunciated as such, but rather, has been presented mostly piecemeal, with the reader left to draw out the theory behind the method from a staggering quantity of case studies and aphorisms.

More than most forms of classical astrology, this material has been extremely difficult for the modern mind to grasp, because the presentation is so alien. Yet medical astrology is precisely the type of subject matter that the modern astrologer needs to be able to work effectively with clients throughout their various life crises."



This specialist report writer is an ideal introduction to the concepts of Classical Astrology or for research on the application of Classical techniques in a birth chart.

The non-editable text is recommended for professional astrologers rather than for client work.

- Easy-to-understand reports use a database of over 1,400 statements and aphorisms (with citations)
- Added commentary explains archaic terminology and updates anatomical references

Price

(including postage, handling & GST)

- Modern
- Synastry
- Solar Writer - Zodiac Child
- Classical
- Medicus

\$455 (For each additional Solar Writer program purchased add \$175.00)

Sample reports may be viewed on our website at:

www.esotech.com.au

ESOTERIC *technologies* Pty. Ltd.
ACN 003 895 396
PO Box 578
Magill SA 5072

Telephone/fax: (08) 8331 3057
Email: sales@esotech.com.au
Website: www.esotech.com.au

Computer requirements

Windows 95, 98, NT4, 2000, ME or XP; any 486DX or Pentium chip based IBM compatible computer. A minimum of 16MB RAM, 32MB or higher recommended. About 10MB disk space. About 5 Megabytes of disk space, plus space for expandable databases of charts and place details. VGA video resolution or better. SuperVGA is recommended. A colour monitor is recommended. Any inkjet or laser printer with a driver suitable for Microsoft Windows. A mouse-pointing device.